



# How to setup PPTP VPN connection on iPad

STEP BY STEP GUIDE

# HOW TO CREATE PPTP VPN CONNECTION

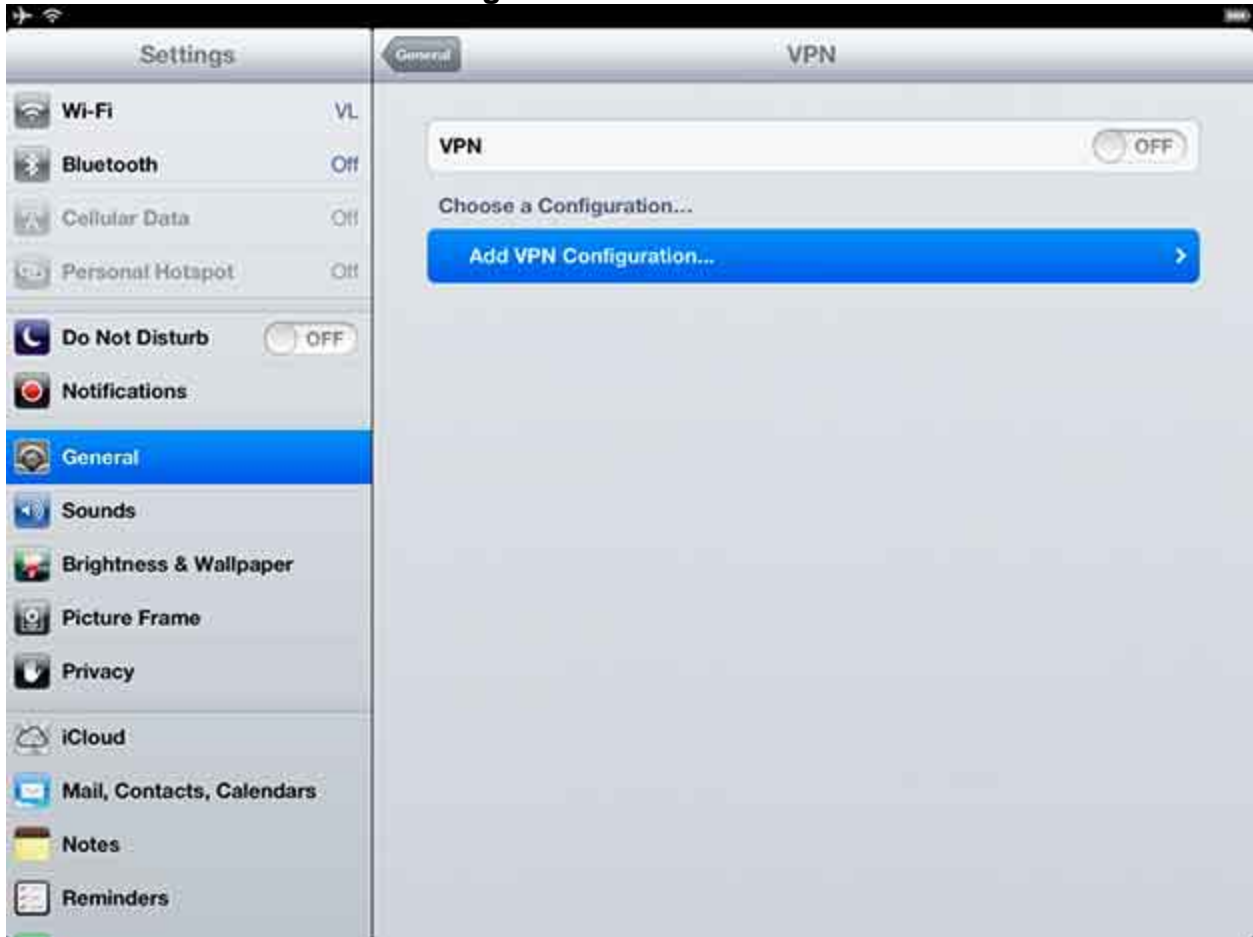
STEP 1. Open your **Settings**.



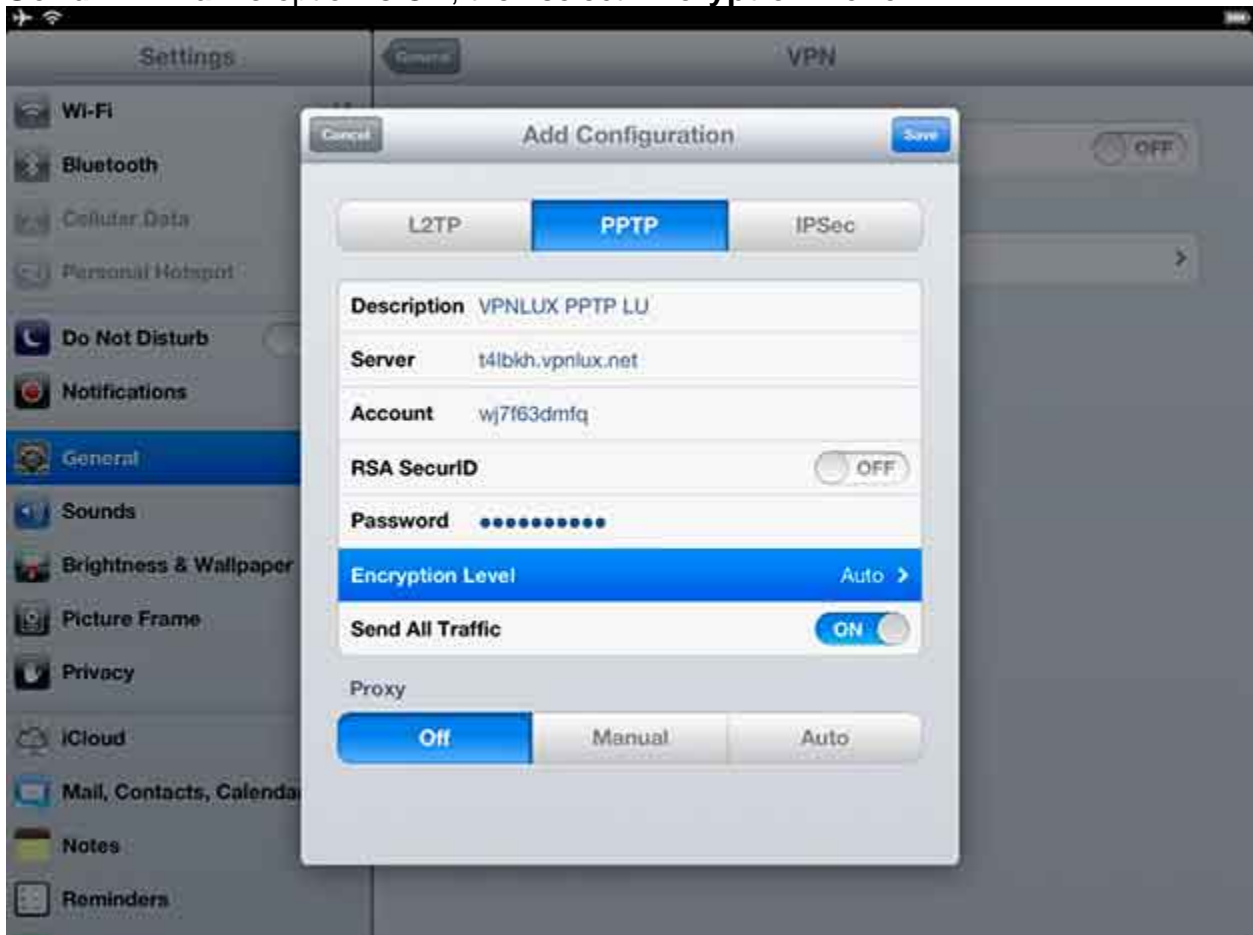
STEP 2. Select **General** settings and open **VPN** settings.



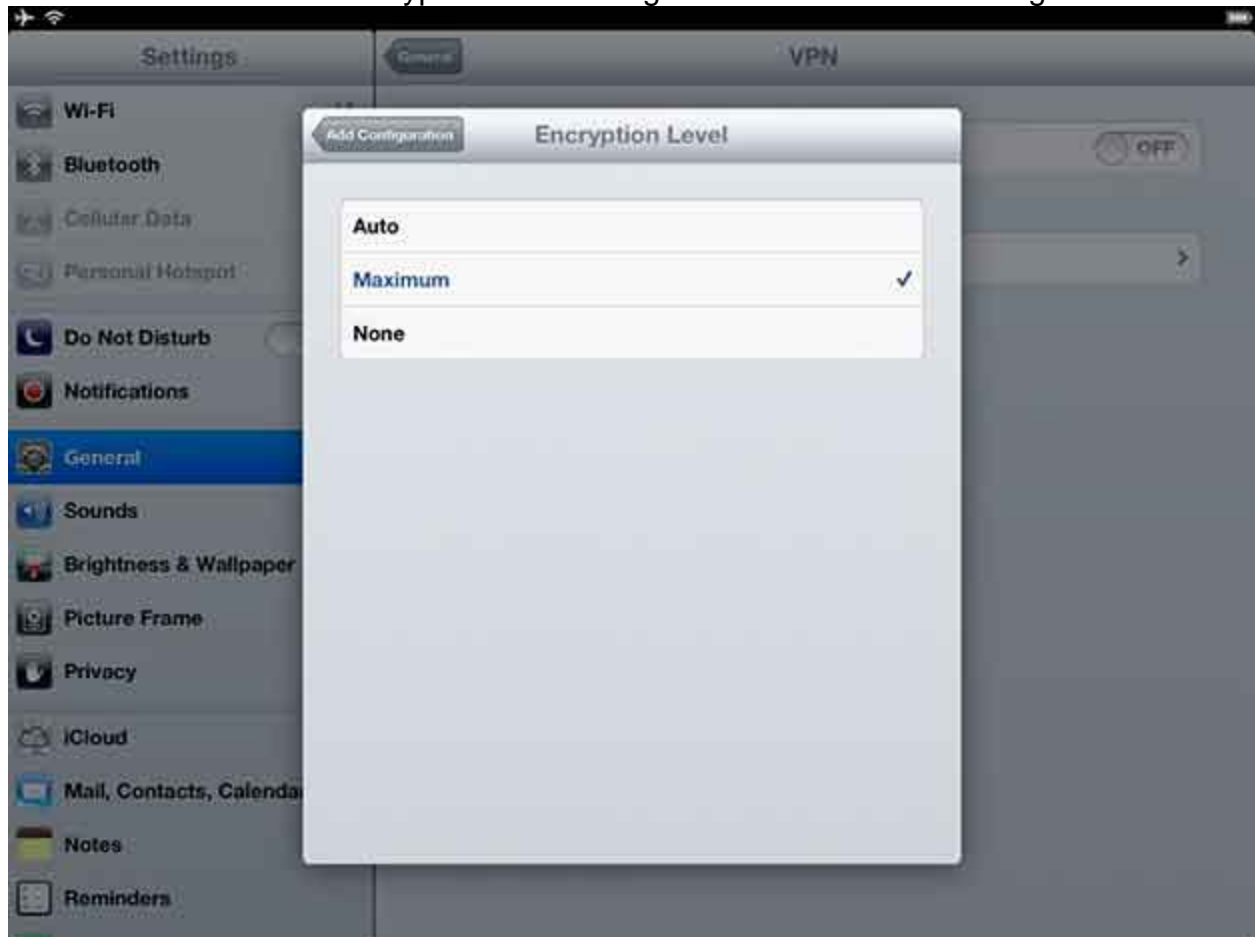
### STEP 3. Select **Add VPN Configuration**.



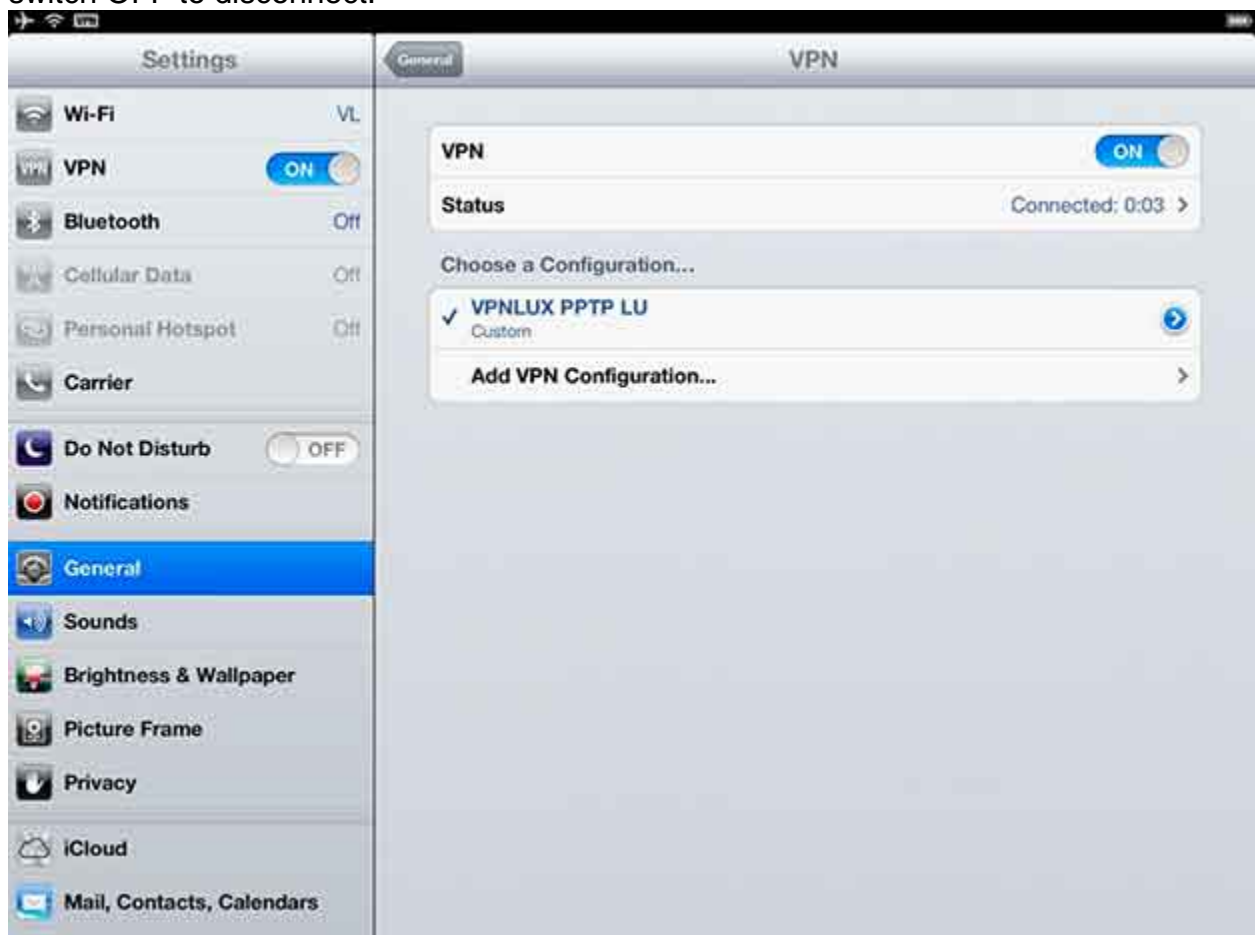
STEP 4\*. Switch to the **PPTP** tab and set the connection name in the Description field, then enter your hostname, login, password and preshared key (look L2TP info text file in control panel) in Server, Account, Password and Secret fields accordingly. Ensure that **Send All Traffic** option is ON, then select **Encryption Level**.



STEP 5. Set Maximum encryption level then go back and Save the configuration.



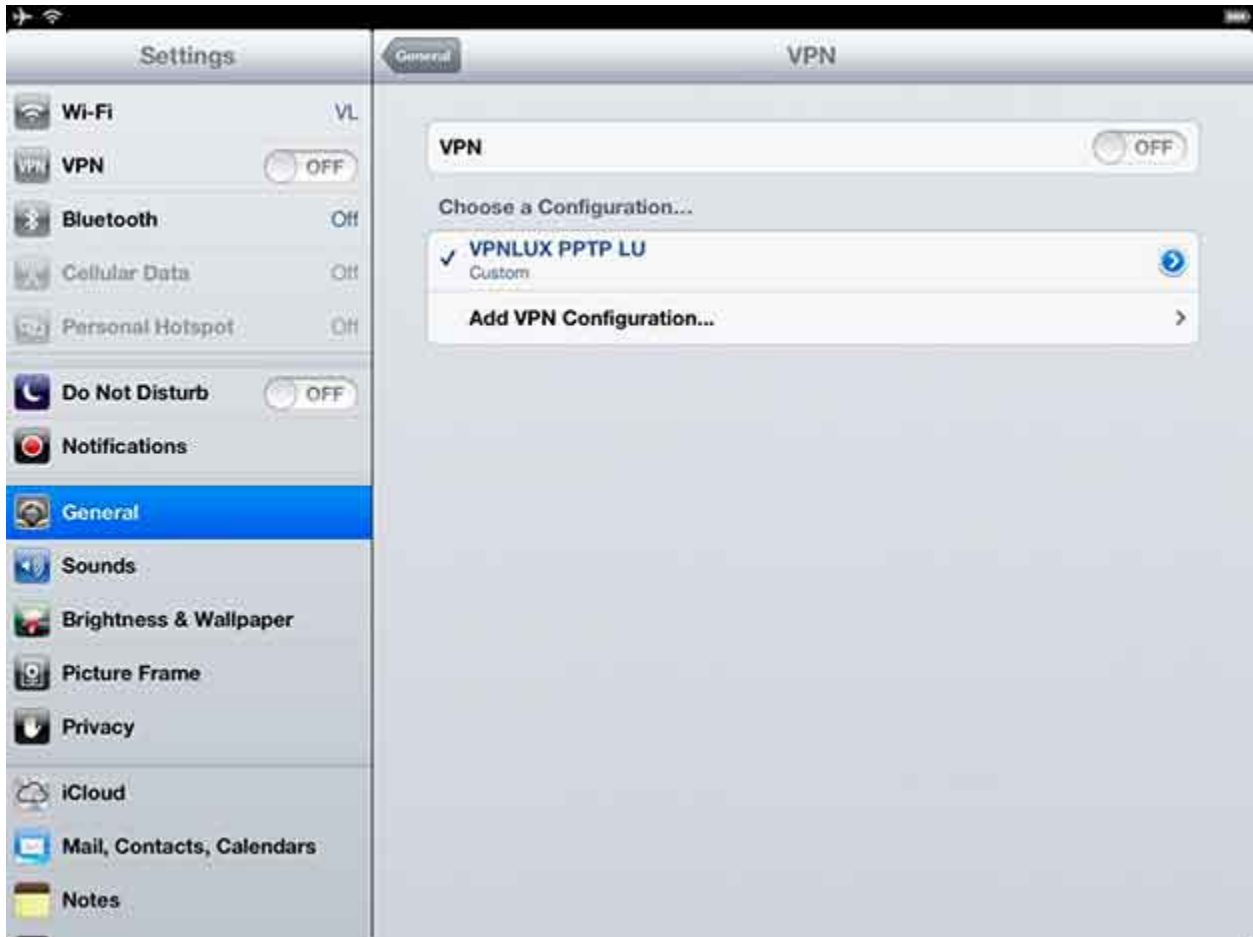
STEP 6. PPTP VPN iOS configuration now is complete. Toggle switch ON to connect. You will see VPN icon in the notification area meaning active VPN connection. Toggle switch OFF to disconnect.



\* Get [VPN access](#) first. Our packages include three types of VPN: L2TP VPN, PPTP VPN and OpenVPN. Visit [VPN technology](#) page to view their specifications.

## HOW TO DELETE PPTP VPN CONNECTION

STEP 6. Open **VPN settings** (see STEP 3) and push the Arrow button next to the connection name.



STEP 7. Tap **Delete VPN** and confirm it.

